



MONTHLY MEMBERSHIP PROGRESS REPORT

District 24 E

Results as of: 01/31/2018

GMT: CINDY GREGG

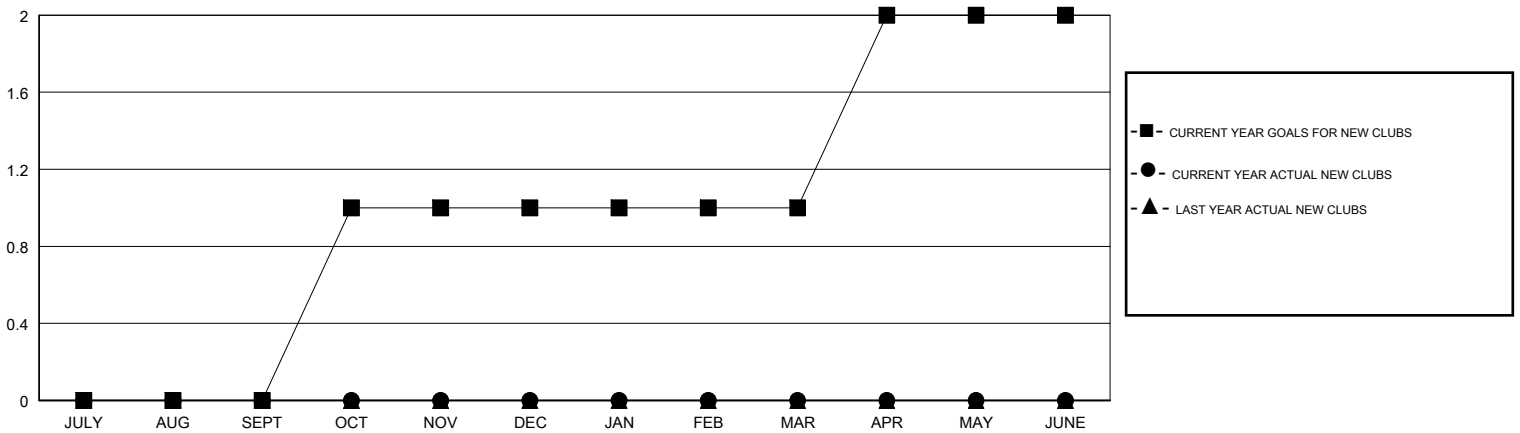
LOCATION VIRGINIA

GMT CA

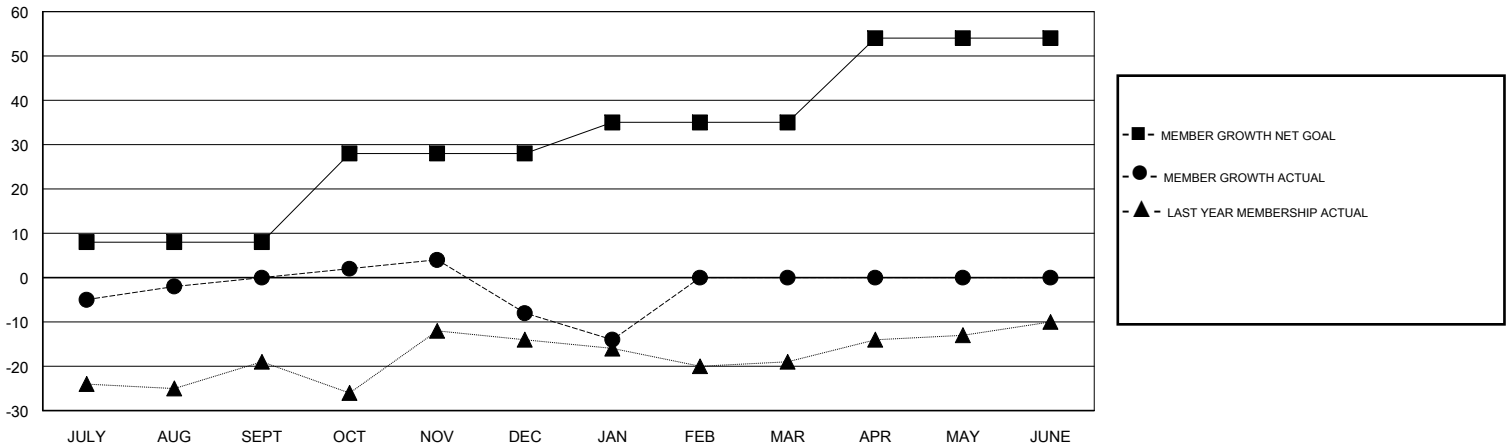
Clubs			
RESULTS FOR 2017-2018			
QUARTER	NEW CLUB GOAL	NEW CLUBS	DROPPED CLUBS
JULY/AUG/SEPT	0	0	0
OCT/NOV/DEC	1	0	0
JAN/FEB/MAR	0	0	0
APR/MAY/JUNE	1	0	0

Members			
RESULTS FOR 2017-2018			
QUARTER	MEMBER GROWTH NET GOAL	MEMBER GROWTH ACTUAL	DROPPED MEMBERS ACTUAL (including transfers)
JULY/AUG/SEPT	8	25	25
OCT/NOV/DEC	20	34	40
JAN/FEB/MAR	7	7	13
APR/MAY/JUNE	19	0	0

GOALS AND ACTUAL NEW CLUBS CUMULATIVE



GOALS AND ACTUAL MEMBERS CUMULATIVE



DROPPED CLUBS: 0	17 CLUBS OF 34 ADDED 1 OR MORE NEW MEMBERS	<u>GENDER DISTRIBUTION</u> MALE 629 (71.80%) FEMALE 247 (28.20%) Women Percentage Fiscal Year Goal: 30%
<u>DROPPED MEMBERS</u> DECEASED 13 CLUB CANCELLED 0 OTHER 65 TOTAL 78	CLICK HERE FOR CUMULATIVE MEMBERSHIP DATA	TOTAL FAMILY UNIT MEMBERS 151 FAMILY MEMBERS PAYING HALF DUES 76